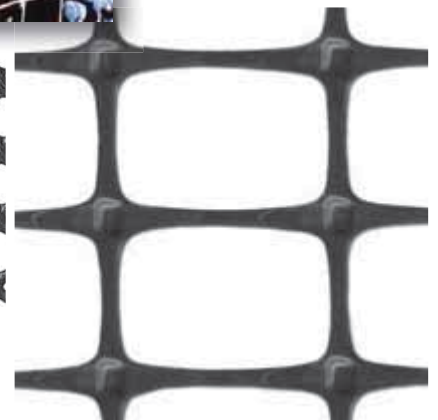
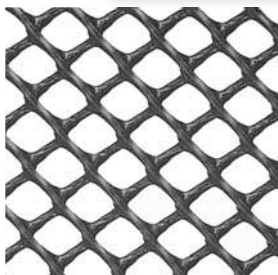
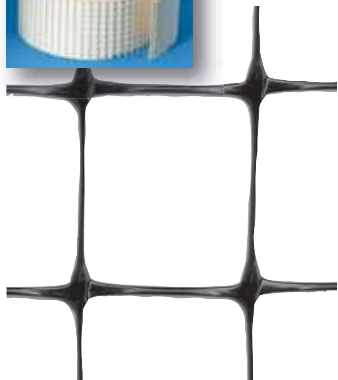
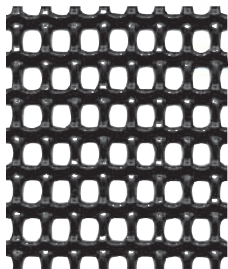
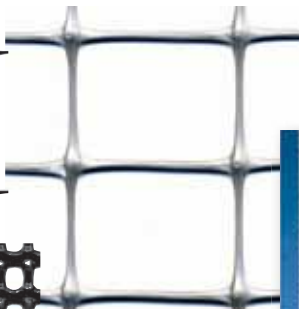
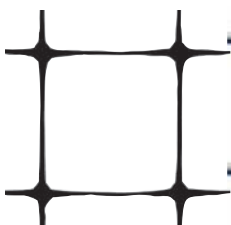
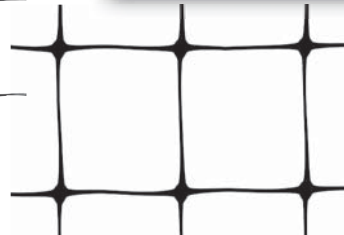
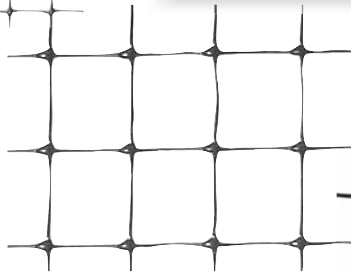
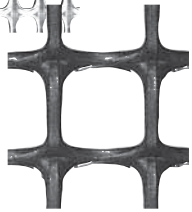
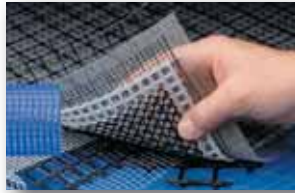




Master Catalog

Agriculture • Aquaculture • Construction • Filtration • Industrial • Medical • Pest Control • Recycling • Science

Same Day Stock Shipment, Custom Fabrication, Worldwide Service



Serving Industry for Over 30 Years



7681 Setzler Parkway North
Minneapolis, MN 55445-9938

Toll Free: 800-328-8456
Phone: 763-496-6355
Fax: 763-496-6356

www.industrialnetting.com

Industrial Netting is a world class converter, fabricator and marketer of plastic netting, mesh and tubes for industry. Markets we serve include; agriculture, aquaculture, filtration, lawn and garden, medical, nursery, pest control, industrial, construction, recycling - among others. Founded in 1981, Industrial Netting has built a reputation as the industry leader in plastic netting with same day stock shipment and immediate service. Small orders, large volumes, custom sizes, special needs, specific packaging are “standard” operations at Industrial Netting. Plus, we boast one of the most extensive line-ups of in-stock netting and tubing products in the industry.

Converting and fabrication of our many products is a feature Industrial Netting provides for many of our customers. It’s still another example of how we’re able to satisfy unique application requirements and meet the various needs of our customers - while adding value through improved efficiencies and enhanced product performance.

We are also here to provide technical assistance as well as experienced, practical - and friendly - application advice, wherever possible.



Industrial Netting is proud to be ISO 9001 Certified.

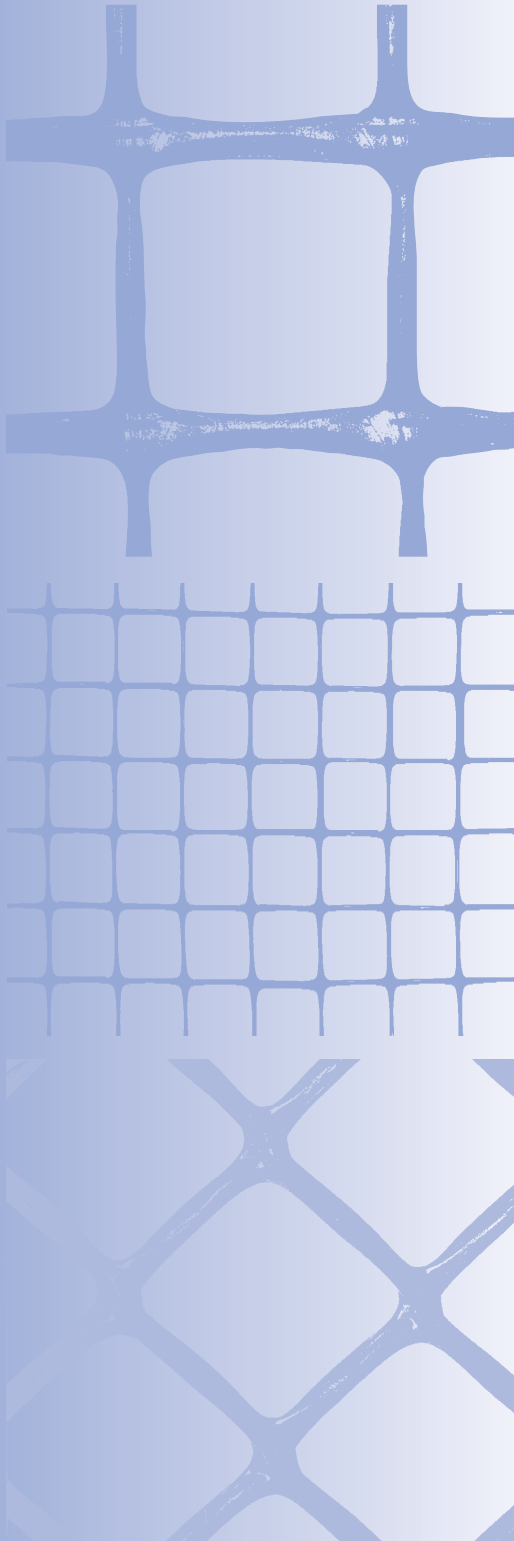
Brand Promise

Custom convert and ship within 24 hours by:

- Providing our customers with a reliable and easy place to do business.
- Offering the world’s largest selection of in stock netting, mesh & tubes.
- Responding to all customer inquiries in 2 hours or less.



Master Catalog



Toll Free: 800-328-8456 USA & Canada
Phone: 1-763-496-6355
Fax: 1-763-496-6356
www.industrialnetting.com

EXTRUDED NETTING

Applications include
Parts Protection
Materials Separation
Warehouse Safety Net
Fencing
Filtration Components
Aquaculture - cages, traps, etc.
Lawn and Garden Netting

EXTRUDED

ORIENTED NETTING

Applications include
Pest and Bird Control
Scrap Metal Containment
Insulation Containment
Fencing
Lawn and Garden Utility
Nursery - tree wrap, mulch containment
Aquaculture - Clams & Oyster protection
Warehouse Safety Net

ORIENTED

TUBES

Applications include
Filtration Tubes
Center Filter Core Support
Aquaculture Stand Pipes
Cartridge Containment

TUBES

TUBULAR SLEEVES

Applications include
Filter Cartridge Containment
Filter Support
Individual Parts Protection
Spring Silencers
Cylinders
Pistons
Precision Components

TUBULAR
SLEEVES

PRECISION METAL MESH

Products include
Chemically Etched Stainless Steel
Electroformed Screens - Gold, Nickel, Copper
Sieves & Pinholes

SPECIALTY

SPECIALTY NETTING & MESH

PTFE Expanded Mesh
Woven Mesh

CUSTOM SERVICES

Complete converting and fabrication services
Slitting
Rewinding
Sheeting
Die Cutting
Tube Cutting
Sonic Welding - Formed Tubes

CUSTOM
SERVICES

Extruded Netting Characteristics

Extruded plastic netting is manufactured in a unique process to produce an integral joint structure for maximum dimensional stability and durability. The netting is not molded, perforated or woven. A broad range of aperture sizes, thicknesses and weights are offered to meet an equally wide range of uses in a host of industries.

High Density Polyethylene (HDPE)

Melt Temperature: 266°F, 130°C
Vicat Softening Point: 248°F, 120°C
Heat Deflection Temperature: 158°F, 70°C
Glass Transition Temperature: -104°F, -76°C

Medium Density Polyethylene (MDPE)

Melt Temperature: 260°F, 126°C
Softening Point: 262°F, 128°C
Heat Deflection Temperature: 178°F, 81°C
Low Temperature Brittleness, F50: -104°F, -76°C

* Non-FDA Approved, unless otherwise specified as FDA approved material.

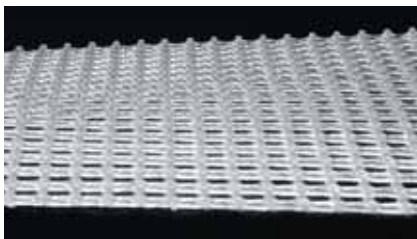
Low Density Polyethylene (LDPE)

Melt Temperature: 248°F, 120°C
Softening Point: 203°F, 95°C
Heat Deflection Temperature (66 psi): 113°F, 45°C
Low Temperature Brittleness, F50: -99°F, -73°C

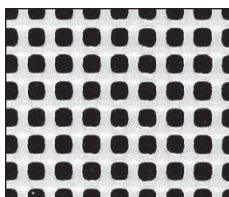
* All natural LDPE products are manufactured to comply with FDA regulations for food contact.



Custom slit roll.

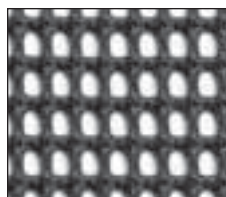


Fused joints lock the aperture.



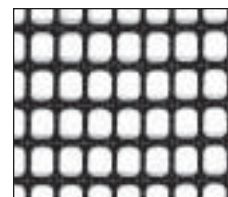
XN 2410

Hole Size: .100" x .100"
 Thickness: .050"
 Strands (per inch): 7 x 7
 Nominal Open Area: 50%
 Max. Roll Width: 39.5"
 Max. Roll Length: 500'
 Resin: HDPE
 Color: Natural



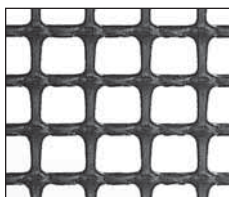
XV 1347

Hole Size: .120" x .120"
 Thickness: .070"
 Strands (per inch): 7 x 5
 Nominal Open Area: 50%
 Max. Roll Width: 47.5"
 Max. Roll Length: 800'
 Resin: PE
 Color: Black



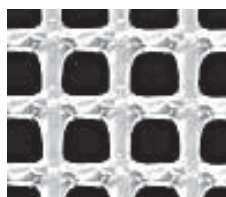
XV 1672

Hole Size: .125" x .150"
 Thickness: .038"
 Strands (per inch): 6.5 x 5
 Nominal Open Area: 58%
 Max. Roll Width: 48"
 Max. Roll Length: 500'
 Resin: MDPE
 Color: Black



XV 1170

Hole Size: .270" x .270"
 Thickness: .080"
 Strands (per inch): 3 x 3
 Nominal Open Area: 58%
 Max. Roll Width: 48"
 Max. Roll Length: 500'
 Resin: MDPE
 Color: Black



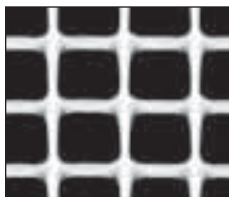
XY 5030

Hole Size: .275" x .275"
 Thickness: .095"
 Strands (per inch): 2.5 x 2.5
 Nominal Open Area: 45%
 Max. Roll Width: 48.5"
 Max. Roll Length: 300'
 Resin: HDPE
 Color: Yellow



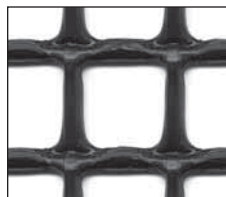
XN 5050

Hole Size: .275" x .275"
 Thickness: .095"
 Strands (per inch): 2.5 x 2.5
 Nominal Open Area: 45%
 Max. Roll Width: 48"
 Max. Roll Length: 300'
 Resin: LDPE
 Color: Natural



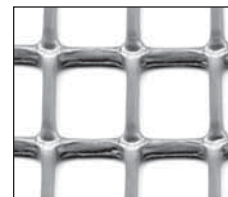
XN 2170

Hole Size: .315" x .260"
 Thickness: .085"
 Strands (per inch): 3 x 3
 Nominal Open Area: 65%
 Max. Roll Width: 37.25"
 Max. Roll Length: 400'
 Resin: HDPE
 Color: Natural



XV 1020

Hole Size: .5" x .5"
 Thickness: .090"
 Strands (per inch): 2 x 2
 Nominal Open Area: 66%
 Max. Roll Width: 48"
 Max. Roll Length: 500'
 Resin: MDPE
 Color: Black



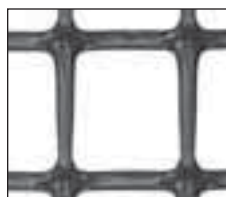
XS 1029

Hole Size: .5" x .5"
 Thickness: .12"
 Strands (per inch): 2 x 2
 Nominal Open Area: 64%
 Max. Roll Width: 36"
 Max. Roll Length: 1017'
 Resin: HDPE
 Color: Silver



XB 1029

Hole Size: .5" x .5"
 Thickness: .12"
 Strands (per inch): 2 x 2
 Nominal Open Area: 64%
 Max. Roll Width: 36"
 Max. Roll Length: 1017'
 Resin: HDPE
 Color: Black



XV 0350

Hole Size: .75" x .75"
 Thickness: .13"
 Strands (per inch): 1 x 1
 Nominal Open Area: 60%
 Max. Roll Width: 48"
 Max. Roll Length: 500'
 Resin: MDPE
 Color: Black

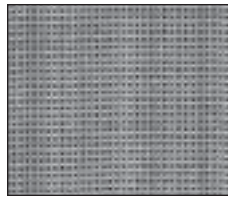
EXTRUDED SQUARE NETTING - Polypropylene

EXTRUDED

Polypropylene (PP)

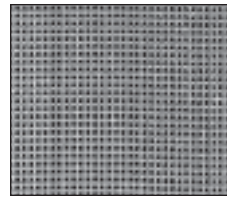
Melt Temperature: 363°F, 161°C
Vicat Softening point: 305°F, 152°C
Heat Deflection Temperature: 194°F, 90°C
Glass Transition Temperature: 32°F, 0°C

All natural PP products are manufactured to comply with FDA regulations for food contact and USP Class VI for pharmaceuticals.



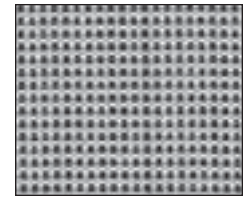
XN 6080

Hole Size: .021" x .027"
 Thickness: .014"
 Strands (per inch): 27.5 x 25
 Nominal Open Area: 35%
 Max. Roll Width: 37.5"
 Max. Roll Length: 1700'
 Resin: PP
 Color: Natural



XN 6070

Hole Size: .025" x .030"
 Thickness: .014"
 Strands (per inch): 28 x 25
 Nominal Open Area: 35%
 Max. Roll Width: 43.5"
 Max. Roll Length: 1000'
 Resin: PP
 Color: Natural



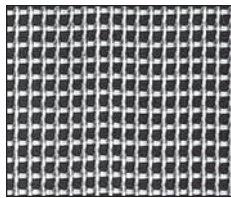
XN 5170

Hole Size: .040" x .053"
 Thickness: .019"
 Strands (per inch): 17 x 14
 Nominal Open Area: 50%
 Max. Roll Width: 43.5"
 Max. Roll Length: 1000'
 Resin: PP
 Color: Natural



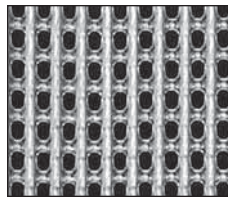
XN 3019

Hole Size: .035" x .050"
 Thickness: .036"
 Strands (per inch): 16 x 13
 Nominal Open Area: 20%
 Max. Roll Width: 47.5"
 Max. Roll Length: 1000'
 Resin: PP
 Color: Natural



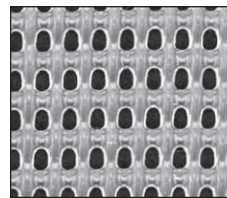
XN 3234

Hole Size: .054" x .080"
 Thickness: .019"
 Strands (per inch): 15 x 11
 Nominal Open Area: 65%
 Max. Roll Width: 54.5"
 Max. Roll Length: 3000'
 Resin: PP
 Color: Natural



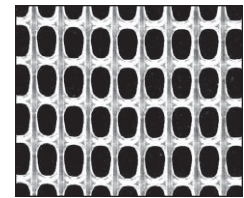
XN 1588

Hole Size: .085" x .115"
 Thickness: .050"
 Strands (per inch): 7 x 6
 Nominal Open Area: 37%
 Max. Roll Width: 43.5"
 Max. Roll Length: 900'
 Resin: PP
 Color: Natural



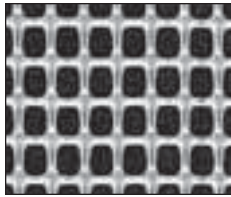
XN 1335

Hole Size: .085" x .115"
 Thickness: .069"
 Strands (per inch): 6.4 x 5
 Nominal Open Area: 35%
 Max. Roll Width: 42"
 Max. Roll Length: 300'
 Resin: PP
 Color: Natural



XN 1678

Hole Size: .120" x .175"
 Thickness: .035"
 Strands (per inch): 7 x 5
 Nominal Open Area: 60%
 Max. Roll Width: 43.5"
 Max. Roll Length: 1200'
 Resin: PP
 Color: Natural



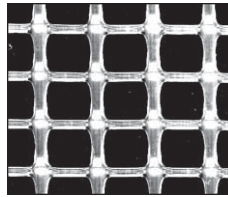
XN 1673

Hole Size: .139" x .175"
 Thickness: .034"
 Strands (per inch): 6 x 5
 Nominal Open Area: 68%
 Max. Roll Width: 44"
 Max. Roll Length: 1250'
 Resin: PP
 Color: Natural



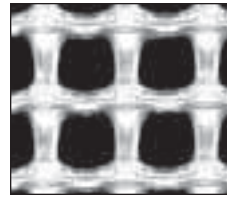
XN 2950

Hole Size: .150" x .220"
 Thickness: .047"
 Strands (per inch): 5 x 4
 Nominal Open Area: 55%
 Max. Roll Width: 37.5"
 Max. Roll Length: 500'
 Resin: PP
 Color: Natural



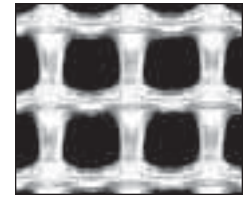
XN 0260

Hole Size: .203" x .187"
 Thickness: .059"
 Strands (per inch): 4 x 4
 Nominal Open Area: 60%
 Max. Roll Width: 41.5"
 Max. Roll Length: 400'
 Resin: PP
 Color: Natural



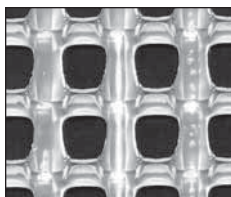
XN 5010

Hole Size: .275" x .297"
 Thickness: .121"
 Strands (per inch): 2.5 x 2.5
 Nominal Open Area: 45%
 Max. Roll Width: 48"
 Max. Roll Length: 300'
 Resin: PP
 Color: Natural



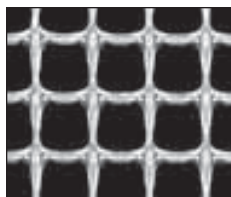
XN 5018

Hole Size: .275" x .297"
 Thickness: .121"
 Strands (per inch): 2.5 x 2.5
 Nominal Open Area: 45%
 Max. Roll Width: 60"
 Max. Roll Length: 300'
 Resin: PP
 Color: Natural



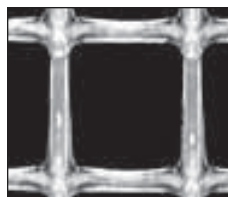
XN 6300

Hole Size: .275" x .275"
 Thickness: .150"
 Strands (per inch): 2.5 x 2.5
 Nominal Open Area: 34%
 Max. Roll Width: 36"
 Max. Roll Length: 500'
 Resin: PP
 Color: Natural



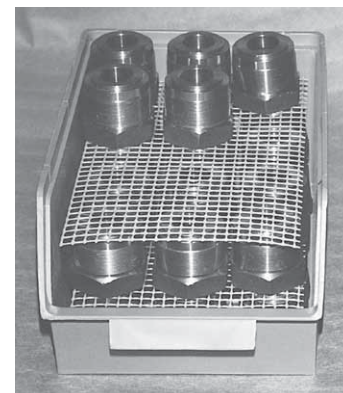
XN 2335

Hole Size: .375" x .375"
 Thickness: .090"
 Strands (per inch): 3 x 3
 Nominal Open Area: 65%
 Max. Roll Width: 48"
 Max. Roll Length: 400'
 Resin: PP
 Color: Natural



XN 3110

Hole Size: .75" x .75"
 Thickness: .13"
 Strands (per inch): 1 x 1
 Nominal Open Area: 71%
 Max. Roll Width: 48"
 Max. Roll Length: 500'
 Resin: PP
 Color: Natural

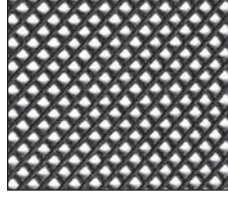


Tote liner.

Extruded Diamond Characteristics

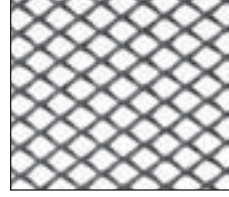
Extruded bi-planar diamond mesh creates flow channels and facilitates the flow of air or fluids. The 'welded' joint structure features excellent dimensional stability to facilitate sheeting or die-cutting to exact dimensions. Choose from nets made from polypropylene (PP) or polyethylene (PE) resins.

Black High Density Polyethylene



XB 1160

Hole Size: .080" x .080"
 Thickness: .060"
 Strands (per inch): 10 x 10
 Max. Roll Width: 30"
 Max. Roll Length: 500'



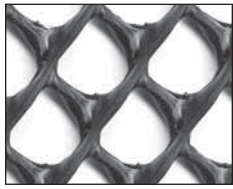
XB 1130

Hole Size: .150" x .150"
 Thickness: .050"
 Strands (per inch): 8 x 8
 Max. Roll Width: 36"
 Max. Roll Length: 500'



XB 1131

Hole Size: .25" x .080"
 Thickness: .100"
 Strands (per inch): 4 x 4
 Max. Roll Width: 48"
 Max. Roll Length: 500'



XB 8310

Hole Size: .375" x .375"
 Thickness: .200"
 Strands (per inch): 2.6 x 2.6
 Max. Roll Width: 80.5"
 Max. Roll Length: 200'



XB 1132

Hole Size: .5" x .5"
 Thickness: .120"
 Strands (per inch): 2 x 2
 Max. Roll Width: 48"
 Max. Roll Length: 500'



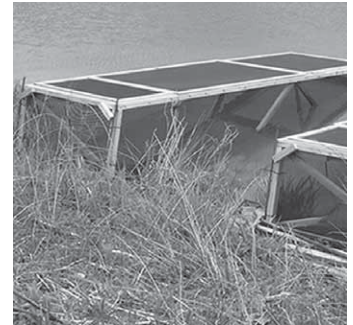
XB 1135

Hole Size: .75" x .75"
 Thickness: .140"
 Strands (per inch): 1.3 x 1.3
 Max. Roll Width: 48"
 Max. Roll Length: 500'



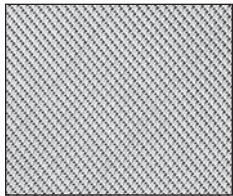
XB 1133

Hole Size: 1.25" x 1.25"
 Thickness: .110"
 Strands (per inch): .8 x .8
 Max. Roll Width: 48"
 Max. Roll Length: 500'



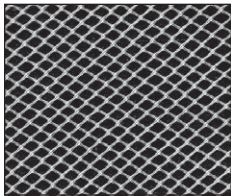
Black cage netting for maximum service life.

Natural Polypropylene



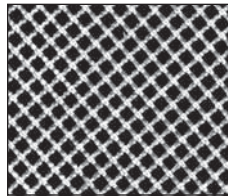
XN 4900

Hole Size: .015" x .015"
 Thickness: .030"
 Strands (per inch): 30 x 30
 Nominal Open Area: 24%
 Max. Roll Width: 40"
 Max. Roll Length: 500'



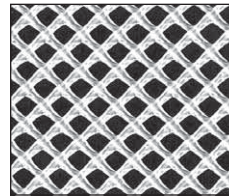
XN 4800

Hole Size: .050" x .050"
 Thickness: .021"
 Strands (per inch): 16 x 16
 Nominal Open Area: 60%
 Max. Roll Width: 40"
 Max. Roll Length: 500'



XN 4411

Hole Size: .065" x .065"
 Thickness: .040"
 Strands (per inch): 12 x 12
 Nominal Open Area: 58%
 Max. Roll Width: 37.5"
 Max. Roll Length: 1000'



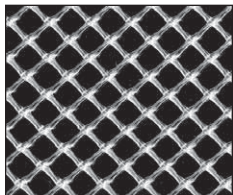
XN 4510

Hole Size: .094" x .094"
 Thickness: .080"
 Strands (per inch): 8 x 8
 Nominal Open Area: 45%
 Max. Roll Width: 24"
 Max. Roll Length: 250'



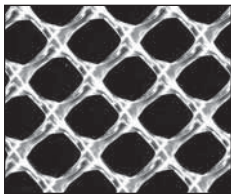
XN 4820

Hole Size: .100" x .100"
 Thickness: .031"
 Strands (per inch): 9 x 9
 Nominal Open Area: 75%
 Max. Roll Width: 41"
 Max. Roll Length: 500'



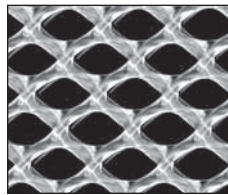
XN 4600

Hole Size: .120" x .120"
 Thickness: .020"
 Strands (per inch): 7 x 7
 Nominal Open Area: 68%
 Max. Roll Width: 41"
 Max. Roll Length: 250'



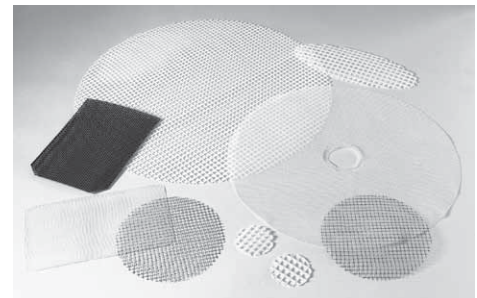
XN 4700

Hole Size: .25" x .25"
 Thickness: .100"
 Strands (per inch): 4 x 4
 Max. Roll Width: 37.5"
 Max. Roll Length: 300'



XN 4720

Hole Size: .25" x .25"
 Thickness: .115"
 Strands (per inch): 3.8 x 3.8
 Max. Roll Width: 49"
 Max. Roll Length: 300'



Die cut netting.

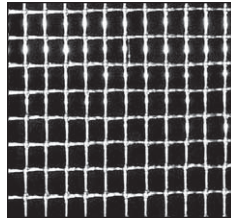
Oriented Netting Characteristics

Biaxially oriented polypropylene nets are lighter weight and more flexible than extruded square mesh. Orientation “stretches” extruded square mesh in one or both directions under controlled conditions to produce strong, flexible, light weight netting. Choose from a broad range of mesh sizes, web widths, apertures, and configurations.

Polypropylene (PP)

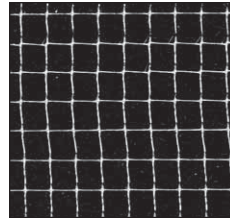
Melt Temperature: 363°F, 161°C
Vicat Softening point: 305°F, 152°C
Heat Deflection Temperature: 194°F, 90°C
Glass Transition Temperature: 32°F, 0°C

All natural PP products are manufactured to comply with FDA regulations for food contact and USP Class VI for pharmaceuticals.



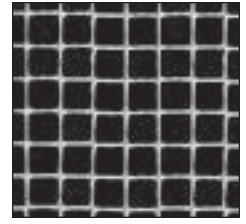
ON 6200

Hole Size: 1/6" x 1/8"
 Weight (lbs/1000ft²): 7
 Strands (per inch): 6 x 8
 Max. Roll Width: 144"
 Max. Roll Length: 5000'
 Resin: PP
 Color: Natural



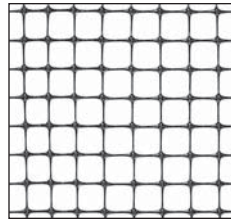
ON 6275

Hole Size: 1/6"
 Weight (lbs/1000ft²): 1.5
 Strands (per inch): 6 x 6
 Max. Roll Width: 152"
 Max. Roll Length: 30,000'
 Resin: PP
 Color: Natural



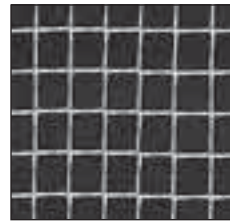
ON 9565

Hole Size: 1/6"
 Weight (lbs/1000ft²): 3.25
 Strands (per inch): 6 x 6
 Max. Roll Width: 96"
 Max. Roll Length: 10,000'
 Resin: PP
 Color: Natural



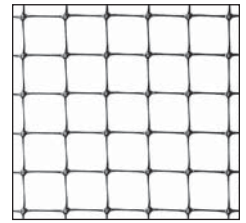
OV 7100

Hole Size: 1/6"
 Weight (lbs/1000ft²): 10.0
 Strands (per inch): 6 x 6
 Max. Roll Width: 168"
 Max. Roll Length: 3000'
 Resin: PP
 Color: Black



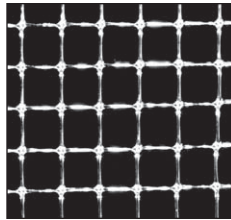
ON 3990

Hole Size: 3/16"
 Weight (lbs/1000ft²): 3.25
 Strands (per inch): 5 x 5
 Max. Roll Width: 96"
 Max. Roll Length: 20,000'
 Resin: PP
 Color: Natural



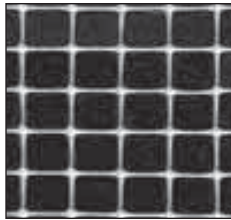
OV 3018

Hole Size: 1/4"
 Weight (lbs/1000ft²): 7
 Strands (per inch): 4 x 4
 Max. Roll Width: 168"
 Max. Roll Length: 3000'
 Resin: PP
 Color: Black



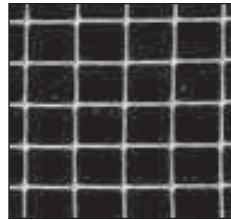
ON 3018

Hole Size: 1/4"
 Weight (lbs/1000ft²): 7
 Strands (per inch): 4 x 4
 Max. Roll Width: 86"
 Max. Roll Length: 3000'
 Resin: PP
 Color: Natural



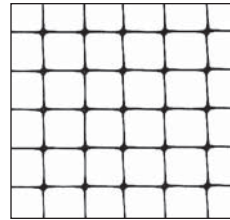
ON 4130

Hole Size: 1/4"
 Weight (lbs/1000ft²): 6
 Strands (per inch): 4 x 4
 Max. Roll Width: 96"
 Max. Roll Length: 10,000'
 Resin: PP
 Color: Natural



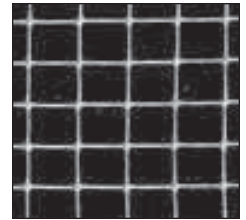
ON 5340

Hole Size: 1/4"
 Weight (lbs/1000ft²): 4
 Strands (per inch): 4 x 4
 Max. Roll Width: 84"
 Max. Roll Length: 5000'
 Resin: PP
 Color: Natural



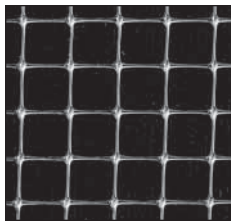
OB 5340

Hole Size: 1/4"
 Weight (lbs/1000ft²): 4
 Strands (per inch): 4 x 4
 Max. Roll Width: 168"
 Max. Roll Length: 5000'
 Resin: PP
 Color: Black



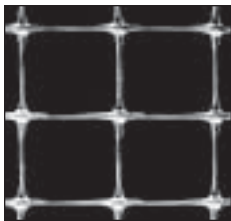
ON 5349

Hole Size: 1/4"
 Weight (lbs/1000ft²): 4
 Strands (per inch): 4 x 4
 Max. Roll Width: 168"
 Max. Roll Length: 1900'
 Resin: PP
 Color: Natural



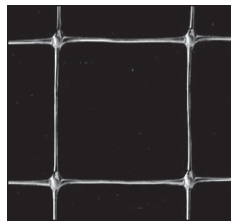
ON 2015

Hole Size: 1/4"
 Weight (lbs/1000ft²): 4.5
 Strands (per inch): 4 x 4
 Max. Roll Width: 120"
 Max. Roll Length: 5,000'
 Resin: PP
 Color: Natural



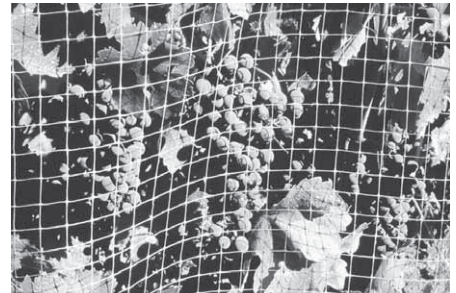
OF 1581

Hole Size: 1/2"
 Weight (lbs/1000ft²): 8.5
 Strands (per inch): 2 x 2
 Max. Roll Width: 168"
 Max. Roll Length: 3000'
 Resin: PP
 Color: Clear



ON 1670

Hole Size: 3/4"
 Weight (lbs/1000ft²): 2.2
 Strands (per inch): 1.5 x 1.5
 Max. Roll Width: 168"
 Max. Roll Length: 5000'
 Resin: PP
 Color: Natural

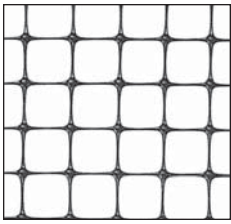


Vineyard bird control.

ORIENTED

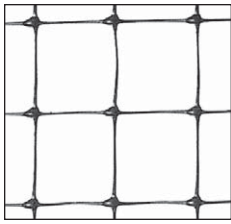
ORIENTED NETTING

ORIENTED



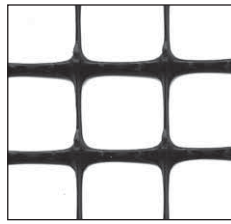
OV 7822

Hole Size: 1/4"
Weight (lbs/1000ft²): 12
Strands (per inch): 4 x 4
Max. Roll Width: 168"
Max. Roll Length: 2500'
Resin: PP
Color: Black



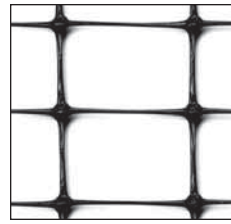
OV 1581

Hole Size: 1/2"
Weight (lbs/1000ft²): 8.5
Strands (per inch): 2 x 2
Max. Roll Width: 168"
Max. Roll Length: 3000'
Resin: PP
Color: Black



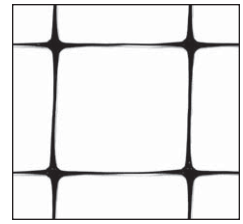
OV 2400

Hole Size: 1/2"
Weight (lbs/1000ft²): 24
Strands (per inch): 2 x 2
Max. Roll Width: 156"
Max. Roll Length: 2500'
Resin: PP
Color: Black



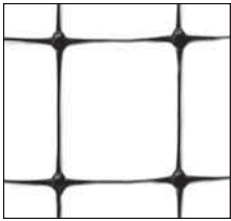
OB 2530

Hole Size: 1/2" x 5/8"
Weight (lbs/1000ft²): 16.5
Strands (per inch): 2 x 1.5
Max. Roll Width: 180"
Max. Roll Length: 330'
Resin: PP
Color: Black



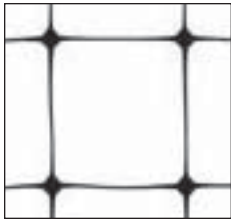
OB 1670

Mesh Size: 3/4"
Weight (lbs/1000ft²): 2.2
Strands (per inch): 1.5 x 1.5
Max. Roll Width: 168"
Max. Roll Length: 5000'
Resin: PP
Color: Black



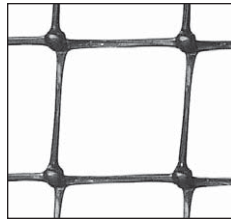
OV 1670

Hole Size: 3/4"
Weight (lbs/1000ft²): 2.9
Strands (per inch): 1.5 x 1.5
Max. Roll Width: 168"
Max. Roll Length: 5000'
Resin: PP
Color: Black



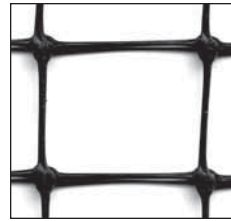
OV 1678

Hole Size: 3/4"
Weight (lbs/1000ft²): 2.8
Strands (per inch): 1.5 x 1.5
Max. Roll Width: 204"
Max. Roll Length: 5000'
Resin: PP
Color: Black



OB 2650

Hole Size: 1"
Weight (lbs/1000ft²): 12
Strands (per inch): 1 x 1
Max. Roll Width: 144"
Max. Roll Length: 2000'
Resin: PP
Color: Black



OB 2550

Hole Size: 1" x 3/4"
Weight (lbs/1000ft²): 12
Strands (per inch): 1 x 1.4
Max. Roll Width: 180"
Max. Roll Length: 330'
Resin: PP
Color: Black



OB 2630

Hole Size: 1"
Weight (lbs/1000ft²): 8
Strands (per inch): 1 x 1
Max. Roll Width: 48"
Max. Roll Length: 5000'
Resin: PP
Color: Black



Pest control netting.



Outdoor market - safe, clean, quiet environmentally friendly bird control.



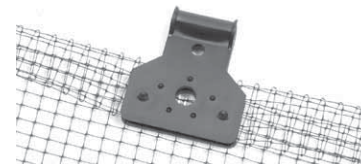
CABLE TIES

Made from black UV stabilized nylon resin to provide the longest possible service life. Choose from 3 different sizes and tensile strengths:

- 7" long - 50# tensile
- 14" long - 120# tensile
- 24" long - 175# tensile



Nursery pest control.



POLYCLIPS "Instant Grommet" - 250 Per Case

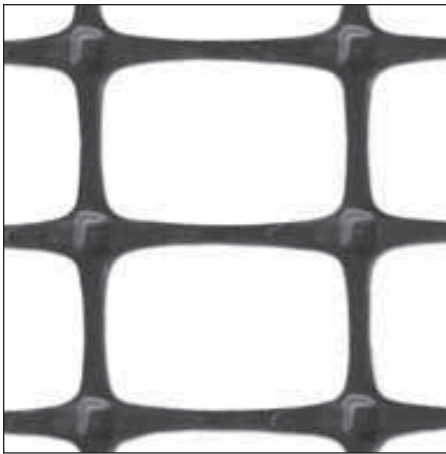


- No tools required.
- Just fold over and snap.
- Makes installation of bird control netting easy.

See our **YouTube** video

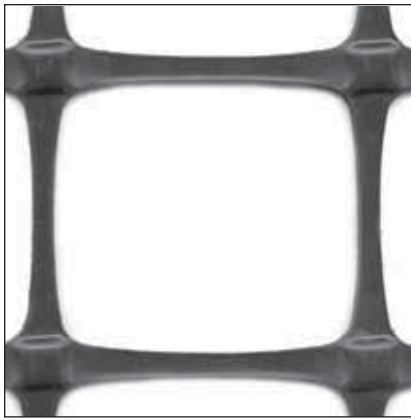
ORIENTED NETTING

ORIENTED



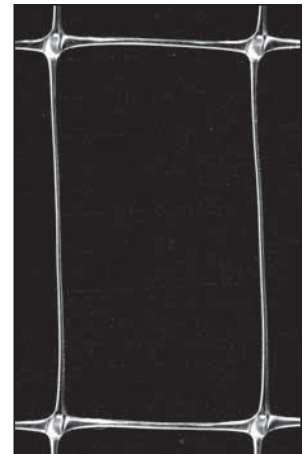
OB 1100

Hole Size: 1 1/2" x 1 1/8"
 Weight (lbs/1000ft²): 44
 Max. Roll Width: 13.1'
 Max. Roll Length: 225'
 Resin: PP
 Color: Black



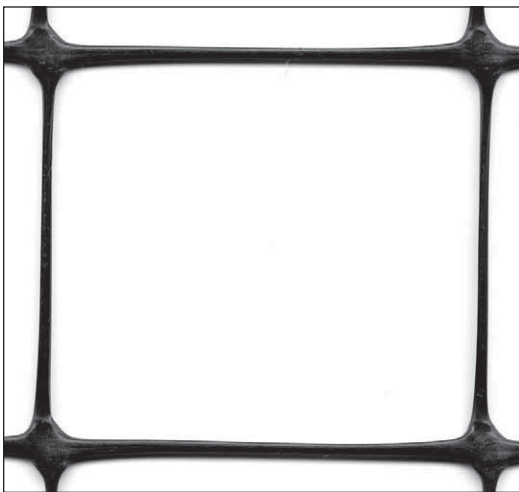
OB 1610

Hole Size: 2" x 2"
 Weight (lbs/1000ft²): 73
 Max. Roll Width: 13.1'
 Max. Roll Length: 164'
 Resin: PP
 Color: Black



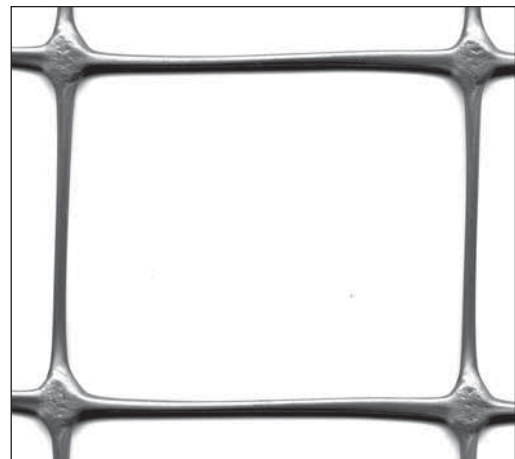
ON 2870

Hole Size: 1" x 2"
 Weight (lbs/1000ft²): 2.7
 Max. Roll Width: 96"
 Max. Roll Length: 20,000'
 Resin: PP
 Color: Natural



OB 2510

Hole Size: 1 3/4" x 2"
 Weight (lbs/1000ft²): 16
 Max. Roll Width: 180"
 Max. Roll Length: 330'
 Resin: PP
 Color: Black



OS 2540

Hole Size: 1 3/4" x 2"
 Weight (lbs/1000ft²): 22.5
 Max. Roll Width: 48"
 Max. Roll Length: 500'
 Resin: PP
 Color: Silver



OB 1500

Hole Size: 1 1/2" per side
 Max. Roll Width: 13'
 Max. Roll Length: 225'
 Tensile Strength (lbs/ft): 790
 Resin: PP
 Color: Black



OB 2520

Hole Size: 7/8" x 1 3/8"
 Weight (lbs/1000ft²): 17.7
 Strands (per inch): n/a
 Max. Roll Width: 180"
 Max. Roll Length: 330'
 Resin: PP
 Color: Black



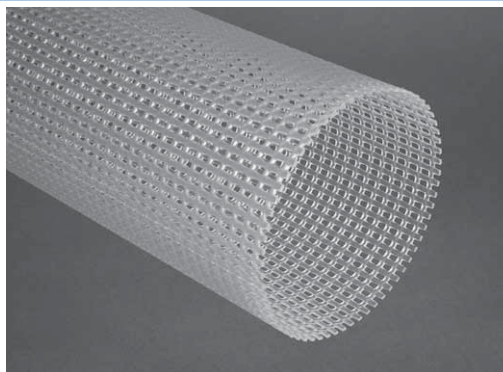
Warehouse safety containment.

Rigid Plastic Tubes Characteristics

Polypropylene (PP)

Melt Temperature: 363°F, 161°C
Softening point: 305°F, 152°C
Heat Deflection Temperature: 194°F, 90°C
Glass Transition Temperature: 14°F, -10°C

All natural PP products are manufactured to comply with FDA regulations for food contact and USP Class VI for pharmaceuticals.



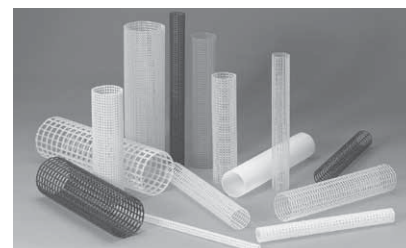
Rigid plastic tubes are extruded to produce fixed apertures with maximum dimensional stability. Industrial Netting features a selection of tubing sizes that is unmatched in the industry.

Extruded mesh tubes are used as center core supports and outer cages in cartridge filters. Designers enjoy maximum flexibility with rigid mesh tubes. Nearly 100 configurations of diameter, wall thickness and open area are available from stock. Unlike molded tubes, minimal tooling costs are required for custom designs.



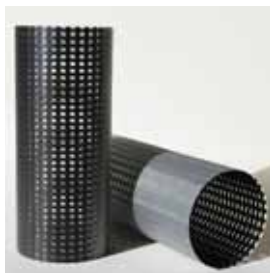
Visit industrialnetting.com/filtration_tubes.html to choose from nearly 100 unique designs:

- Diameters ranging from 0.312" ID to 4.74" OD.
- Wall thickness from 0.045" to 0.158"
- Scan this QR code for selections.



Common lengths in stock for immediate shipment or precision cuts to your required sizes.

Fabricated Tubes & Overwraps



Custom fabricated tubes and overwraps.

Tubes can be formed from any of our square mesh flat nets. In a proprietary process, netting is ultrasonically welded or heat sealed to form a broad range of tube possibilities - from fine meshes to heavier, rigid and more open forms. The range of diameters is virtually unlimited using this custom forming process.

This same process is used to create structures with rigid cores and fabric or mesh surfaces. Fine mesh netting or nonwoven fabrics can be overwrapped and welded to rigid mesh tubes to combine the structural support of extruded tubes with the expanded functional range of these fine mesh nettings and fabrics.

Filtration Cartridge Sleeves

Flexible, extruded tubular sleeves protect and contain filter media in cartridge applications. Select from a variety of mesh sizes, shapes, diameters and lengths to meet your specifications.



Part Number	Layflat	Diameter Range (inches)		Roll Length (feet)	Strands (per inch)	Polymer	Color
NG 5015	1.48"	1.25"	2.25"	340' & 1500'	3	LDPE	Natural
NG 5025	1.68"	1.75"	2.25"	340' & 1500'	3	PP	Natural
NG 5045	2.26"	2.00"	2.50"	340' & 1500'	2.5	PP	Natural
NG 5050	2.28"	1.75"	2.75"	340' & 1500'	1.5	LDPE	White
NG 5055	2.28"	1.75"	2.75"	340' & 1500'	1.5	LDPE	Yellow

EXTRUDED TUBULAR SLEEVES

NetGuard™ Standard Duty Elastic Sleeves

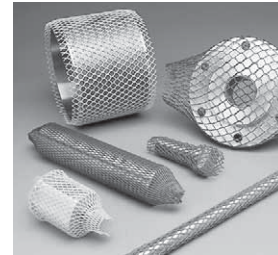
This low-density polyethylene netting is highly elastic, and has a soft, cushioned feel. NetGuard stretches up to twice its diameter and is our most economical tubular sleeve for the protection of irregular-shaped parts from damage often caused during shipping and handling.



Rolls or custom cut.

Part Number	Diameter Range	Color	Roll Length
NG 8010	1/4" to 1/2"	Orange	1000'
NG 8020	1/2" to 1-1/4"	Light Blue	1000'
NG 8030	1-1/4" to 2"	Navy Blue	400'
NG 8040	2" to 3"	Red	200'
NG 8050	3" to 4"	Beige	200'
NG 8060	4" to 5-1/2"	Yellow	200'
NG 8070	5-1/2" to 7"	Brown	200'
NG 8080	7" to 8-3/4"	Gold	200'

Note: custom cut lengths available

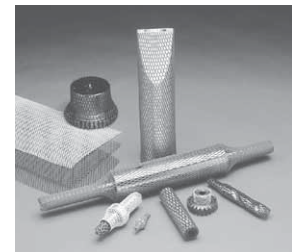


Individual parts protection.

Vexar® Workgrade Elastic Sleeves

Vexar® Workgrade elastic sleeves are our thickest, sturdiest protective sleeves, with additional strands and closer spacing. Although not as elastic as Standard or Super Duty sleeves, Workgrade sleeves provide extra thick protection for individual parts. Workgrade Sleeves are reusable and can eliminate the need for other expensive and time consuming protective wrappings like bubble wrap, Styrofoam, cardboard, paper or wood.

Product Number	Diameter Range	Color	Roll Length
NG 3010	1/4" to 1/2"	Yellow	820' or 1500'
NG 3020	1/2" to 1"	Blue	820' or 1500'
NG 3030	1" to 1/2"	Red	164' or 1500'
NG 3035	1-1/2" to 2"	Black	164' or 600'
NG 3040	2" to 2-1/2"	White	164' or 500'
NG 3045	2-1/2" to 3"	Yellow	164'
NG 3050	3" to 4"	Green	164'
NG 3060	4" to 5"	Orange	164'
NG 3065	5" to 6"	Brown	164'
NG 3070	6" to 7"	Blue	164'
NG 3080	7" to 9"	Natural	164'



Color coded and reusable.



Conforms to virtually any shape.

Vexar® Superduty Elastic Sleeves

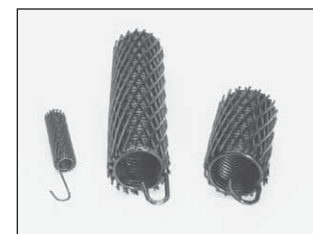
Versatile Superduty sleeves are made from low-density polyethylene, but are heavier, with closer strand spacing than our Standard Duty NetGuard, - still with great elasticity. These elastic netting sleeves will stretch easily over a broad range of part sizes and shapes to provide a "form fit" soft cushion for economical protection against abrasion, scratching, chipping and corrosion.

Product Number	Diameter Range	Color	Roll Length
NG 2010	1/4" to 3/8"	Red	820' or 1500'
NG 2015	3/8" to 5/8"	Orange	820' or 1500'
NG 2020	1/2" to 1"	Blue	820' or 1500'
NG 2030	1" to 2"	Yellow	164' or 1500'
NG 2040	2" to 4"	Red	164' or 1500'
NG 2060	4" to 6"	Green	164'
NG 2070	6" to 8"	Brown	164'
NG 2080	8" to 10"	Crystal	164'
NG 2090	10" to 12"	Green	164'

Note: custom cut lengths available



End mill protection.



Spring silencers.

Chemically Etched Stainless Steel Screens

Close tolerance, precision etched perforated metal screens have established new standards for precision, dimensional stability and discharge efficiency. They are manufactured from 300 series stainless steel in a photo chemical machining process that allows precise control of hole size and placement.



Chemically etched screens are key parts of rotary screen applications such as fruit separators, sugar processing, micro electronics, telecommunications, optics, aviation, computers, bio metrics and medical Celerons.

- **No mechanical stresses built into product**
- **Etched screens have no burrs or rough edges**
- **Properties of metals are consistent and not altered**
- **5 levels of hardness are available in all sizes with minimum orders**
- **Precision mesh designs are available in stock or by custom order**

Specifications: Micro® Stainless Steel Screen (SEA)

Part Number	Thickness (inches)	Hole Size (inches)	Hole Size (microns)	Hole Profile (see note below)	Pitch center-to-center (inches)	Orientation (alignment of holes to one another)	Nominal Open Percent Area	Material Type	Material Hardness
BE 1500	0.015	0.018	457	B	0.0310	60°	31.0%	304	1/2 hard
BE 1501	0.015	0.018	457	B	0.0310	60°	31.0%	316	full hard
BE 1400	0.014	0.018	457	B	0.0310	60°	31.0%	316	1/4 hard
BE 1401	0.014	0.018	457	B	0.0310	60°	31.0%	316	annealed
BE 1402	0.014	0.020	508	B	0.0420	60°	21.0%	316	annealed
BE 1403	0.014	0.015	381	A	0.0310	60°	21.0%	316	annealed
BE 1000	0.010	0.0115	292	A	0.0220	60°	25.0%	301	full hard
BE 0800	0.008	0.024	610	A	0.0420	60°	30.0%	316	1/4 hard
BE 0801	0.008	0.012	305	A	0.0220	60°	27.0%	316	annealed
BE 0802	0.008	0.010	254	A	0.0220	60°	19.0%	316	annealed
BE 0803	0.008	0.009	229	B	0.0155	90°	26.0%	316	1/4 hard
BE 0804	0.008	0.007	178	A	0.0220	60°	9.0%	316	annealed
BE 0805	0.008	0.009	229	A	0.0155	60°	31.0%	316	annealed
BE 0806	0.008	0.009	229	A	0.0155	60°	31.0%	316L	1/4 hard
BE 0807	0.008	0.009	229	A	0.0155	60°	31.0%	304	3/4 hard
BE 0808	0.008	0.009	229	A	0.0155	60°	31.0%	316	full hard
BE 0809	0.008	0.014	356	A	0.0220	60°	37.0%	304L	annealed
BE 0810	0.008	0.009	229	A	0.0155	60°	31.0%	304L	annealed
BE 0601	0.006	0.006	152	A	0.0155	90°	11.0%	316	annealed
BE 0602	0.006	0.008	203	A	0.0155	90°	21.0%	316	annealed
BE 0500	0.005	0.006	152	A	0.0112	60°	27.0%	316	1/2 hard
BE 0501	0.005	0.006	152	B	0.0100	90°	28.0%	316	full hard
BE 0502	0.005	0.006	152	A	0.0120	60°	21.0%	316	1/4 hard
BE 0503	0.005	0.011	279	B	0.0170	60°	38.0%	316	annealed
BE 0200	0.002	0.003	76	B	0.0060	60°	23.0%	304	full hard
BE 0201	0.002	0.003	76	A	0.0060	60°	23.0%	304	full hard

KEY:

Hole Profile: A = Coned Hole, B = Etched equally from both sides. Minimum manufacturing run for non-stock products is 2 panels. Quality perforated area of panels measures 18" x 21" minimum.

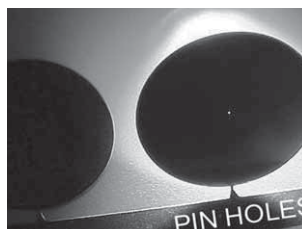
Material Temper (hardness) Availability:

• Annealed • 1/8 hard • 1/4 hard • 3/8 hard • 1/2 hard • 5/8 hard • 3/4 hard • hard • full hard

NOTE: Please contact us for custom configurations

Precision Etched Pin Holes

Pin Holes are etched to exacting standards from .001" thick stainless steel with the hole taper, or bevel, equally etched from both sides. They are used for a variety of packaging and testing applications.



Applications include calibrated leak and pressure testing, gas and liquid filtering and beam aperture spatial filtering.

Specifications:

Part No	Hole Size*	Hole Profile	Material	Thickness
BP0119	.003"	+/- 3°	1/4 full hard SS	.001"
BP0117	.002"	+/- 3°	1/4 full hard SS	.001"
BP0116	.025"	+/- 3°	1/4 full hard SS	.001"

*hole size tolerance +/- 15% material thickness

Electroformed Screens

Electroformed Screens feature extremely precise apertures in very close tolerances for use in sorting, screening and sifting in a variety of applications. They are available in a broad range of mesh sizes with holes as small as 5 microns in diameter. The electroforming process results in a fine-line mesh that is more precise than other mesh processes.



Products are nickel, ideal for imaging, electronics, spectrometry, sound and light filtration and phonics – and copper and gold, ideal for electronics and semiconductor applications.

Available in Nickel, Copper, or Gold



- Precise square apertures
- Broad range of mesh sizes, 5 to 2000 wires per inch
- Hole size as small as 5 microns
- Flat, smooth metal surface
- Thickness from 3 to 250 microns
- Typical sheet size 11" x 11" (varies by product)
- 99.98% purity levels

Precision Sieves

The electroforming process is used to create Precision Sieves—high tolerance instruments used in sorting, sifting, and screening a variety of materials both in laboratory and manufacturing environments. The flat, smooth surface of the mesh and the close tolerance result in improved cleaning, with less clogging and particulate entrapment common with other types of sieves.



Applications include abrasive powders, confections, solder sphere, petroleum, powder coatings and pharmaceuticals.

Specifications:

Micro-Mesh Standard Sieves

Rim Diameter	Rim Height/SS	Mesh Size	Mesh Tolerance	Standards
3"	1" or 3"	3um - 200um Square, Round, Slotted & Custom	+/- 2um	ASTM-161 ISO 3310-3
6"	1"		+/- 2um	
8"	1" or 2"		+/- 2um	
12"	2"		+/- 2um	
75mm	25mm		+/- 2um	
100mm	25mm		+/- 2um	
200mm	50mm		+/- 2um	
3"(Acrylic)	1" or 3"	+/- 2um		

Micro-Mesh Ultra Sieves

Rim Diameter	Rim Height/SS	Mesh Size	Mesh Tolerance	Standards
3"	1" or 3"	2um - 500um Square, Round, Slotted & Custom	+/- 1.0um	ASTM-161 ISO 3310-1
8"	1" or 2"		+/- 1.0um	
75mm	25mm		+/- 1.0um	
100mm	25mm		+/- 1.0um	
200mm	50mm		+/- 1.0um	
3"(Acrylic)	1" or 3"		+/- 1.0um	

Accessories: Micro-Mesh sieves are available with stainless steel covers, matching pans and nesting pans for complete classification systems.

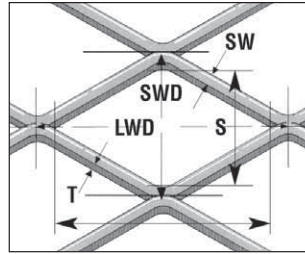
Note: Please see our website for metric information.

Note: Precision Sieves are produced in compliance with ISO specification 3310 and ASTM specification E-161-87. Test data and a certificate of compliance are available for each sieve produced.

PTFE Mesh

PTFE (polytetrafluoroethylene) mesh provides a wide range of adaptability to the most extreme filtration and industrial applications. PTFE mesh is suitable for high temperature applications and provides a high degree of chemical resistance as well. Other characteristics of the material include non-toxicity, high anti-adhesiveness, high dielectric properties and low friction.

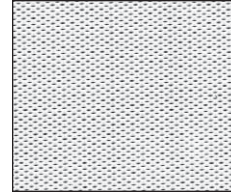
Materials are certified to meet FDA regulations for food contact.



LWD = long way dimension
SWD = short way dimension
T = thickness
SW = strand width
L = long axis aperture dimension
S = short axis aperture dimension

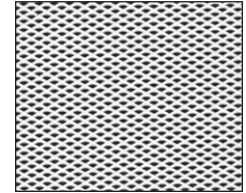
Polytetrafluoroethylene (PTFE)

Specific Gravity: 2.14
Max. Continuous Service Temp: 500F, 260 C
Melt Temperature 608°- 644°F, 320°- 340°C
Heat Deflection Temperature: 250F, @ 264 psi
Certifications: Food and Drug Administration, Code of Federal Regulations, CFR 21, sections 177.1550, 177.2600, 175.300, 175.105, 176.170, and 176.180



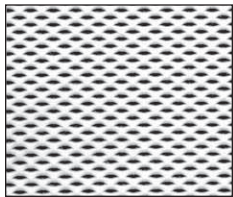
ET 8120

LWD x SWD: .0493"x.0335"
 Thickness: .008"
 Max. Roll Width: 12"
 Strand Width: .0039"
 Aperture Size: .025" x .005"



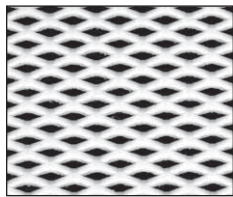
ET 8300

LWD x SWD: .075"x.048"
 Thickness: .018"
 Max. Roll Width: 17.5"
 Strand Width: .0157"
 Aperture Size: .045" x .025"



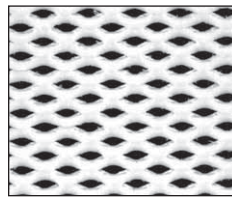
ET 8500

LWD x SWD: .125"x.070"
 Thickness: .028"
 Max. Roll Width: 18"
 Strand Width: .0270"
 Aperture Size: .08" x .025"



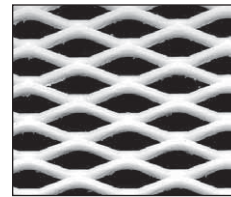
ET 8700

LWD x SWD: .235"x.11"
 Thickness: .045"
 Max. Roll Width: 17.5"
 Strand Width: .0450"
 Aperture Size: .15" x .05"



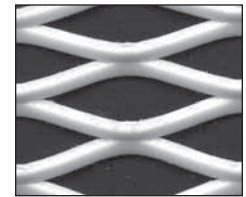
ET 8750

LWD x SWD: .232"x.1350"
 Thickness: .05"
 Max. Roll Width: 17.8"
 Strand Width: .0550"
 Aperture Size: .15" x .055"



ET 8900

LWD x SWD: .5"x.24"
 Thickness: .07"
 Max. Roll Width: 18"
 Strand Width: .0575"
 Aperture Size: .32" x .14"



ET 9000

LWD x SWD: .762"x.243"
 Thickness: .140"
 Max. Roll Width: 18"
 Strand Width: .10
 Aperture Size: .890" x .428"

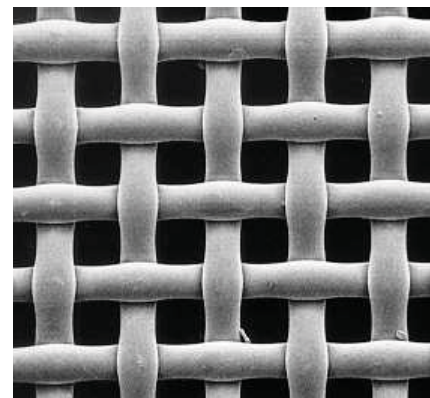
Woven Mesh

Woven mesh industrial textiles are constructed from a broad variety of monofilament synthetic fibers. This precision weaving process creates fine mesh industrial textiles with apertures (hole sizes) as small as 1 micron.



Visit industrialnetting.com/woven.html to choose from nylon, polyester, and polypropylene in a wide range of openings and strand counts.

Scan this QR code with your Smart phone for options.



Magnified woven mesh.

CUSTOM SERVICES

Make it easy on yourself! Let us do the custom converting. Years of experience have led Industrial Netting to develop custom equipment and unique manufacturing techniques that insure consistent quality at an economical price point. Out-source those cumbersome secondary operations by choosing from a variety of our custom converting services.

Slitting Precision slitting of roll goods to customer requirements.

Rewinding Rewinding and folding master rolls to shorter rolls for easier handling and shipping, or matching roll lengths of companion materials.

Sheeting Custom sheeting of materials to customer dimensions. Prompt turnaround on small quantity and short lead-time orders.

Die Cutting Custom cutting to any shape.

Tube Cutting Precision cutting of rigid tubes to customer dimensions.

Fabrication Sonic welding and heat sealing of plastic netting into shapes.

Formed Tubes Sonic weld or heat seal flat netting to form tubes.

Overwrapped Tubes Wrap and weld netting, mesh or fabrics to rigid mesh tubes.



rewinding



folding



precision tube slitting



sonic welding



sheeting



roll cutting



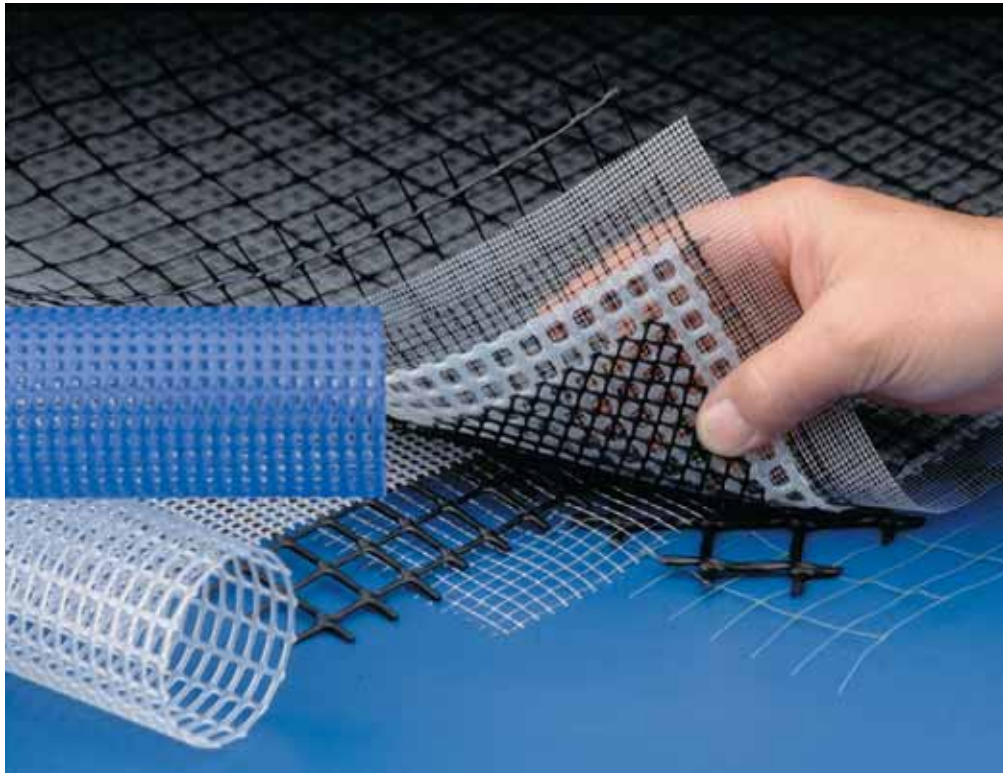
die cutting



7681 Setzler Parkway North
Minneapolis, MN 55445-9938

Agriculture • Aquaculture • Construction • Filtration • Industrial • Medical • Pest Control • Recycling • Science

Same Day Stock Shipment, Custom Fabrication, Worldwide Service



Custom convert and ship within 24 hours

7681 Setzler Parkway North
Minneapolis, MN 55445-9938
Toll Free: 1-800-328-8456 Phone: 763-496-6355 Fax: 763-496-6356
e-mail: info@industrialnetting.net www.industrialnetting.com

